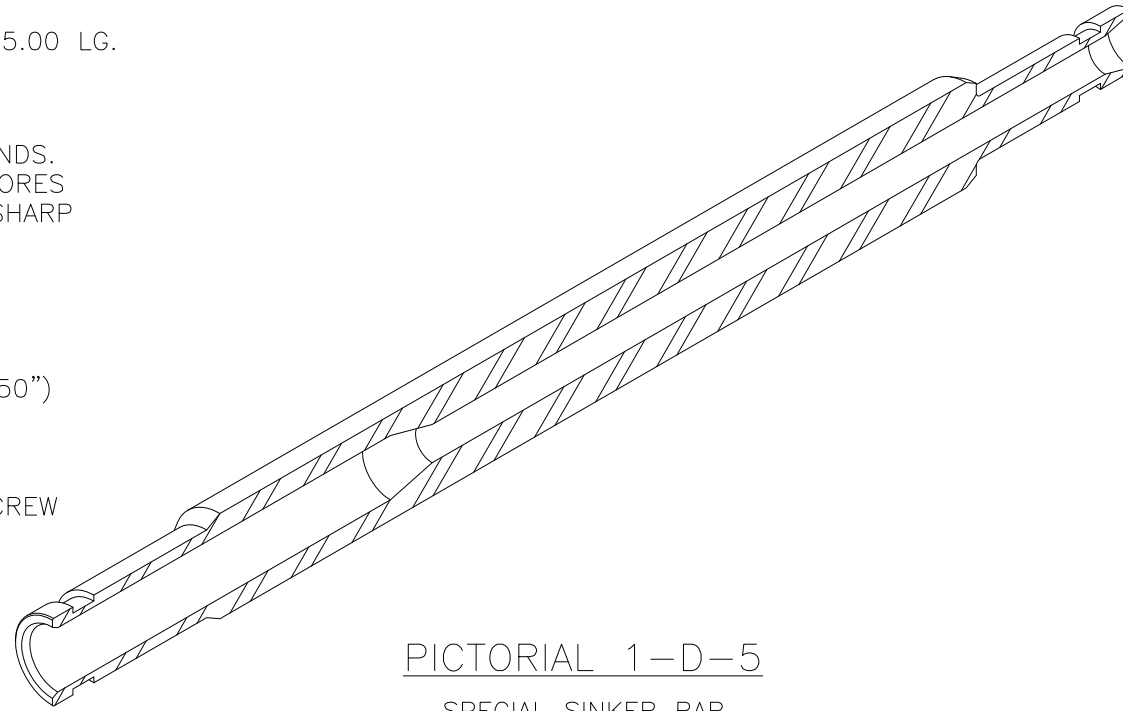


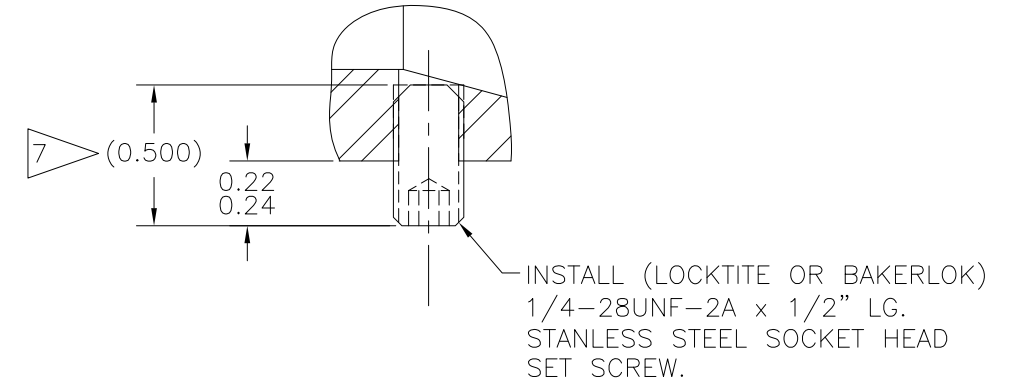
NOTES:

1. MATERIAL: BAR, 1018 STEEL OR EQ.,  $\phi 2.75 \times 55.00$  LG.
2. HEAT TREAT: NONE
3. SURFACE TREATMENT: AEROCOTE OR EQ.
4. INTERNAL BORE MAY BE DRILLED FROM BOTH ENDS. A SMALL STEP AT THE INTERSECTION OF THE BORES IS ACCEPTABLE IF SMOOTHED TO BE FREE OF SHARP EDGES.
5. WEIGHT: 69.44 LBS.
6. RE-APPLY AEROCOTE (OR EQUIVALENT) AFTER INCREASING DEPTH OF LEFT END BORE (TO 11.50") AND INSTALLING SET SCREWS AT BOTH ENDS.
7. TAP DEPTH IS APPROXIMATE AS SHOWN. DO NOT BREAK THRU TO BORE WITH TAP. GRIND SET SCREW SHORTER AS REQUIRED TO MAINTAIN 0.22/0.24 PROJECTION FROM O.D. OF SINKER BAR.

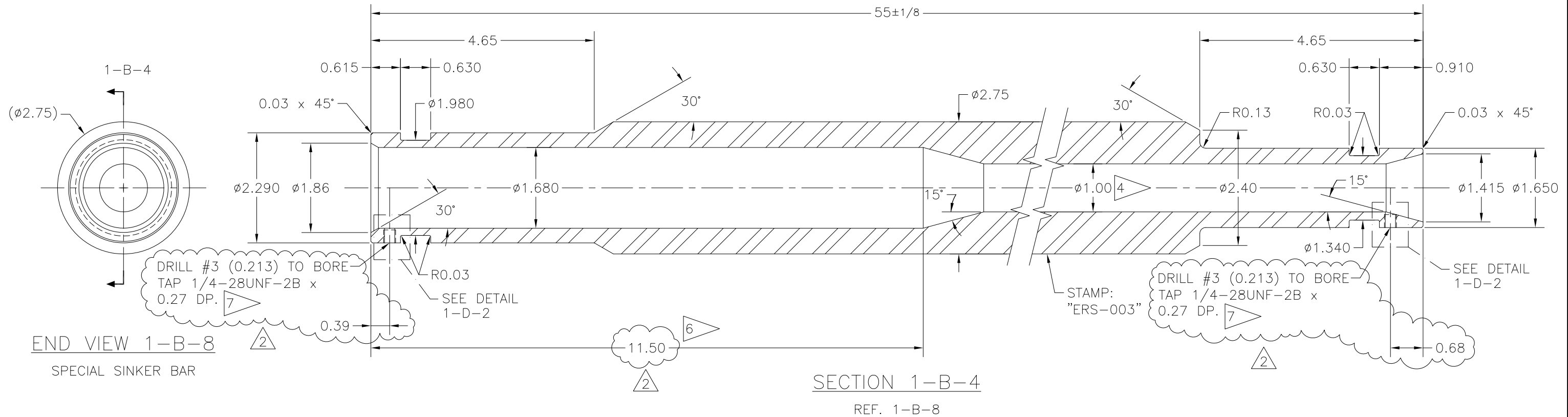
REVISIONS				
NO	DESCRIPTION	DATE	BY	APR/DATE
0	ISSUED FOR MANUFACTURE	05/12/10		
1	REV. MAT'L, ADDED NOTE 4	06/02/10		
2	ADDED DRILL AND TAP FOR ANTI-ROTATION SET SCREW	2/21/11		
	INCREASED BORE DEPTH			



PICTORIAL 1-D-5  
SPECIAL SINKER BAR  
N.T.S.



DETAIL 1-D-2  
REF. 1-B-1 & 1-B-6



END VIEW 1-B-8  
SPECIAL SINKER BAR

SECTION 1-B-4  
REF. 1-B-8

TOLERANCES: UNLESS OTHERWISE SPECIFIED 0.X ± 0.030 0.XX ± 0.010 0.XXX ± 0.005 ANGLES ± 1/2° BREAK EDGES 0.015 x 45° MIN. FINISH 125 / $\sqrt{\text{R}}[0.010A]$ ALL DIMS ARE IN INCHES, UNLESS NOTED OTHERWISE.	PROPRIETARY NOTICE THIS DRAWING AND THE INFORMATION IT CONTAINS ARE CONSIDERED CONFIDENTIAL, AND MAY NOT BE REPRODUCED, COPIED OR USED, IN PART OR IN WHOLE, WITHOUT PRIOR WRITTEN CONSENT.	<b>Integrated Ocean Drilling Program</b> TEXAS A&M UNIVERSITY 1000 DISCOVERY DRIVE COLLEGE STATION, TX 77845	
		SHEET 1 OF 1 SCALE FULL BY KM DATE 03/30/10	TITLE SPECIAL SINKER BAR SYSTEM ERS v.2 APPROVED TP CHECKED JCS SIZE D P/N ERS-003 REV. 2